

## 4 Output Expander Module For ESL-2, ESL, Elite S & Elite S Lite

The ESL OUTPUT connects directly to the keypad bus of the control panel using the ARR-14 quick connect loom provided or via the on board keypad bus terminals

Each control panel comes fitted with 4 on board outputs & can be expanded up to 8 outputs with the addition of our ESL OUTPUT expander modules. Each ESL OUTPUT module comes fitted with 4 outputs, allowing a maximum of 2 x ESL OUTPUT modules to be connected to 1 x control panel

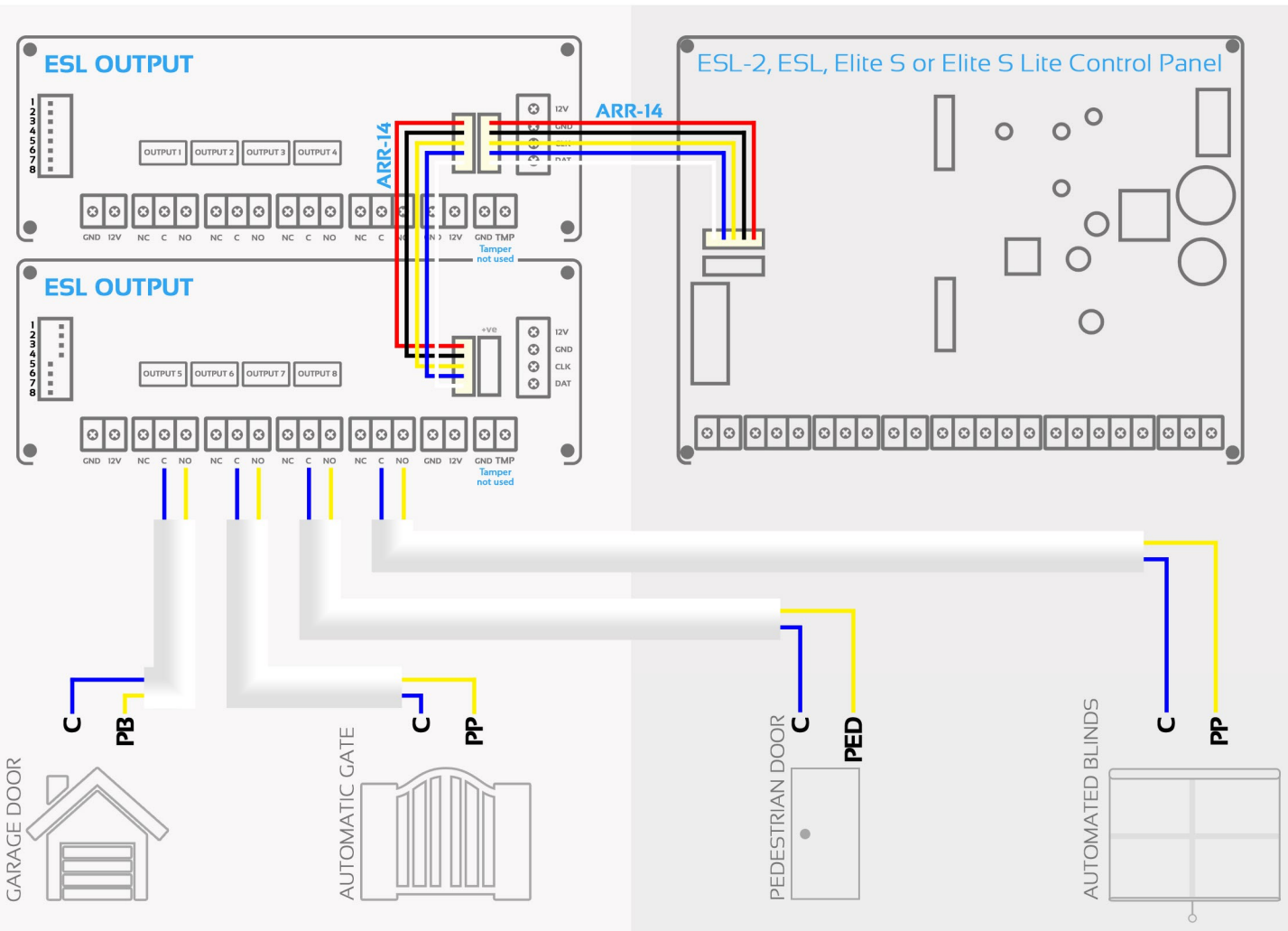
### Each ESL OUTPUT supports:

- **4 x Individual Outputs** - Each 2A 30VDC Rated
- **2 x 12VDC accessory power terminals** - Each 12VDC 1.6A Fused
- **2 x Quick connect keypad bus sockets** - Use with ARR14 bus loom
- **1 x Keypad bus screw down terminals** - 12V - GND - CLK - DAT
- **Sockets** for EC-PSU plug in power supply module

**Power Requirements**  
**Voltage In:** 12-15VDC  
**Min Current:** 60mA  
**Max Current:** 140mA

### Basic Connection Diagram

Below is a simple connection diagram using the ARR-14 quick connect looms provided



### Relay Addressing

- **Dipswitch 1** - OFF = Relay 1 follows output 1      ON = Relay 1 follows output 5
- **Dipswitch 2** - OFF = Relay 2 follows output 2      ON = Relay 2 follows output 6
- **Dipswitch 3** - OFF = Relay 3 follows output 3      ON = Relay 3 follows output 7
- **Dipswitch 4** - OFF = Relay 4 follows output 4      ON = Relay 4 follows output 8

**Dipswitch 5 - 8** are unused on this product